

Anti-H_CDH3 hlgG1 Antibody

Product information

GM-46573AB-10	10 µg
GM-46573AB-100	100 µg
GM-46573AB-1000	1 mg

Antibody Information

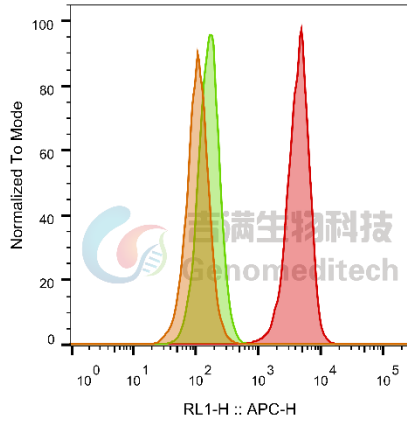
Species Reactivity	Human; Cynomolgus
Clone	/
Source/Isotype	Monoclonal human IgG1/k
Application	Flow cytometry
Specificity	Detects CDH3
Gene	CDH3
Other Names	CDHP, HJMD, PCAD
Gene ID	1001(human); 102142204(cynomolgus)
Background	CDH3, also known as placental cadherin or p-cadherin, is a type I cadherin. It consists of three distinct domains, an extracellular domain (ECD) containing five cadherin repeats, a transmembrane domain, and a highly conserved tail containing catenin binding domains. ECD mediated cis and trans interactions between multiple CDH3 molecules, while the catenin binding domain linked the CDH3 protein to a RHO catenin 120 and thus to the cell cytoskeleton. CDH3 is known to be overexpressed in many malignant tumors, including breast cancer, stomach cancer, endometrial cancer, head and neck cancer and colorectal cancer. Overexpression of CDH3 protein had a worse prognosis than those with low or no CDH3 protein expression. Therefore, it can be used to target CDH3 related small molecule drugs or monoclonal antibodies, double antibodies.
Storage	Store at 2-8°C short term (1-2 weeks).Store at ≤ -20°C long term. Avoid repeated freeze-thaw.
Formulation	Phosphate-buffered solution, pH 7.2.
Endotoxin	< 1 EU/mg, determined by LAL gel clotting assay

Version:3.1 Revision Date:12/25/2023

Data Examples

Flow cytometry

The recommended usage range is 0.5-4 μg per test. H_CDH3 CHO-K1 Cell Line(Catalog # GM-C24261) was stained with Anti-H_CDH3 hlgG1 Antibody (Catalog # GM-46573AB) or isotype control antibody, followed by anti-Human IgG APC-conjugated Secondary Antibody .

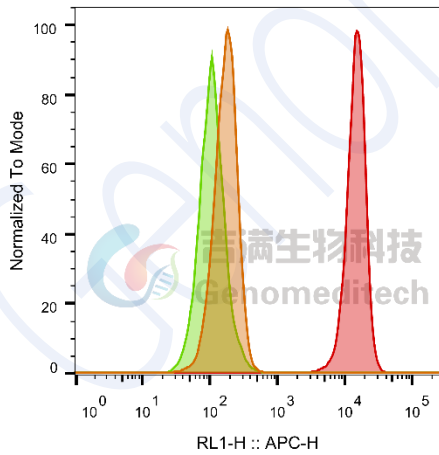


SampleID	Geometric Mean : RL1-H
CHO-K1 anti-H_CDH3+APC-2nd Ab	107
CHO-K1 H_CDH3 H_IgG+APC-2nd Ab	163
CHO-K1 H_CDH3 anti-H_CDH3+APC-2nd Ab	4243

Fig. FACS

Flow cytometry

The recommended usage range is 0.5-4 μg per test. Cynomolgus_CDH3 CHO-K1 Cell Line (Catalog # GM-C24264) was stained with Anti-H_CDH3 hlgG1 Antibody (Catalog # GM-46573AB) or isotype control antibody, followed by anti-Human IgG APC-conjugated Secondary Antibody .



SampleID	Geometric Mean : RL1-H
CHO-K1 anti-H_CDH3+APC-2nd Ab	169
CHO-K1 Cyno_CDH3 H_IgG+APC-2nd Ab	109
CHO-K1 Cyno_CDH3 anti-H_CDH3+APC-2nd Ab	14033

Fig. FACS